

Patagonia Gold Plc

2009

Patagonia Gold - VOTING

	ORDINARY						SPECIAL
	Resolution 1	Resolution 2	Resolution 3	Resolution 4	Resolution 5	Resolution 6	Resolution 7
	Approval of Accounts	Reaponitemnt of William Humphries	Reappointment of Richard Prickett	Reappointment of Auditors	Repricing of Certain Options	Allotment of securities up to £ 1.5 M	Allotment of sec. up to £ 1.5 M w/o limits of Sec 89
For	347,155,821	347,155,821	346,655,821	347,155,821	344,328,392	347,101,579	346,541,392
Discretion	80,750	80,750	80,750	80,750	80,750	80,750	82,750
	347,236,571	347,236,571	346,736,571	347,236,571	344,409,142	347,182,329	346,624,142
	100.00%	100.00%	99.86%	100.00%	99.19%	99.98%	99.82%
Against	0	0	500,000	0	2,827,429	54,242	612,429
	0	0	500,000	0	2,827,429	54,242	612,429
	0.00%	0.00%	0.14%	0.00%	0.81%	0.02%	0.18%
Total	347,236,571	347,236,571	347,236,571	347,236,571	347,236,571	347,236,571	347,236,571
	100%	100%	100%	100%	100%	100%	100%

Total Shares Issued at 9 June 2009
(% Votes cast by shareholders)

593,552,783
58.50%

IMPORTANT NOTICE

The information contained in these slides has been prepared by Patagonia Gold Plc ("the Company") in connection with a proposed placing of ordinary shares in the capital of the Company. The information in these slides is subject to updating, completion, revision, further verification and amendment without notice.

These slides have not been approved by the United Kingdom Listing Authority as a prospectus under the Prospectus Rules (made under Part VI of the Financial Services and Markets Act 2000 ("FSMA")) or by the London Stock Exchange. These slides do not constitute or form part of any offer for sale or solicitation of any offer to buy or subscribe for any securities nor shall they or any part of them form the basis of or be relied on in connection with, or act as any inducement to enter into, any contract or commitment whatsoever. No reliance may be placed for any purpose whatsoever on the information or opinions contained in these slides or the presentation.

No undertaking, representation, warranty or other assurance, express or implied, is made or given by or on behalf of the Company or Matrix Corporate Capital LLP ("Matrix") any of their respective directors, officers, partners, employees, agents or advisers or any other person as to the accuracy or completeness of the information or opinions contained in these slides or the presentation and no responsibility or liability is accepted by any of them for any such information or opinions or for any errors, omissions, misstatements, negligence or otherwise for any other communication written or otherwise. In addition, in issuing these slides, neither the Company nor Matrix undertakes any obligation to update or to correct any inaccuracies which may become apparent in these slides. Notwithstanding the aforesaid, nothing in this paragraph shall exclude liability for any undertaking, representation, warranty or other assurance made fraudulently.

The drilling results contained in the presentation have been reviewed and verified by Marc Sale, (BSC. Geology, Fellow AusIMM, member AIG) a qualified person as defined in National Instrument 43-101 and a Director of Patagonia Gold plc. No independent verification of the drilling results has been completed.

The statements contained in these slides and the presentation may include "forward looking statements" that express expectations of future events or results. All statements based on future expectations rather than on historical facts are forward looking statements that involve a number of risks and uncertainties and the Company cannot give assurance that such statements will prove to be correct. Any forward looking statements made by or on behalf of the Company speak only as of the date they are made. Neither the Company nor Matrix undertakes to update forward looking statements to reflect any changes in expectations, events, conditions or circumstances upon which such statements are made.

These slides are for distribution in or from the UK only to persons authorised or exempted within the meaning of FSMA or any order made thereunder or to those persons to whom these slides may be lawfully distributed pursuant to the Financial Services and Markets Act 2000 (Financial Promotion) Order 2005 ("Financial Promotion Order") as amended: including investment professionals as defined in article 19(5), high net worth entities as defined in article 49(2) of the Financial Promotion Order and members of the Company. Persons who do not fall within any of these definitions should not rely on these slides nor take any action upon them, but should return them immediately to the Company.

The presentation should not be considered a recommendation by the Company or Matrix or any of their respective directors, officers, employees, agents or advisers in connection with any purchase of or subscription for securities of the Company.

Recipients of the slides and information contained in the presentation should note that Matrix which is regulated in the United Kingdom by the Financial Services Authority is acting exclusively for the Company and no-one else in relation to the proposals set out in the slides and the presentation and will not be responsible to any other person for providing the protections afforded to customers of Matrix or for providing advice to any other person in relation to the proposals set out in the presentation.

The information contained in the slides and the presentation is confidential and may include price sensitive information and accordingly attendees at the presentation should not deal in any securities of the Company before the information is made public. In agreeing to attend the presentation, you have agreed to be treated as an "insider" in relation to the information to be disclosed at the presentation.

These slides should not be copied or distributed by recipients and, in particular, should not be distributed by any means including electronic transmission, to persons with addresses in the United States of America, Canada, Australia, Republic of Ireland, South Africa or Japan their possessions or territories or to any citizens thereof, or to any corporation, partnership or such entity created or organised under the laws thereof. Any such distribution contrary to the above could result in a violation of the laws of such countries.

These slides are confidential and are being supplied to you solely for your information and may not be reproduced, re-distributed or passed to any other person or published in whole or in part for any purpose. By accepting receipt of this document, you agree to be bound by the limitations and restrictions set out above.

June 2009

PATAGONIA GOLD PLC

A precious metals exploration company operating in the southern Patagonia provinces of Argentina

In February 2007 acquired highly prospective Santa Cruz exploration portfolio from Barrick Gold

Excellent results from drilling and exploration in 2007 (Lomada de Leiva), 2008 and 2009 (Cap Oeste / Manchuria) with resources of 640,000 oz. of gold equivalent.

Positive Scoping study on low cost Heap leach operation at Lomada intention to fast track for production of gold in 2009/10

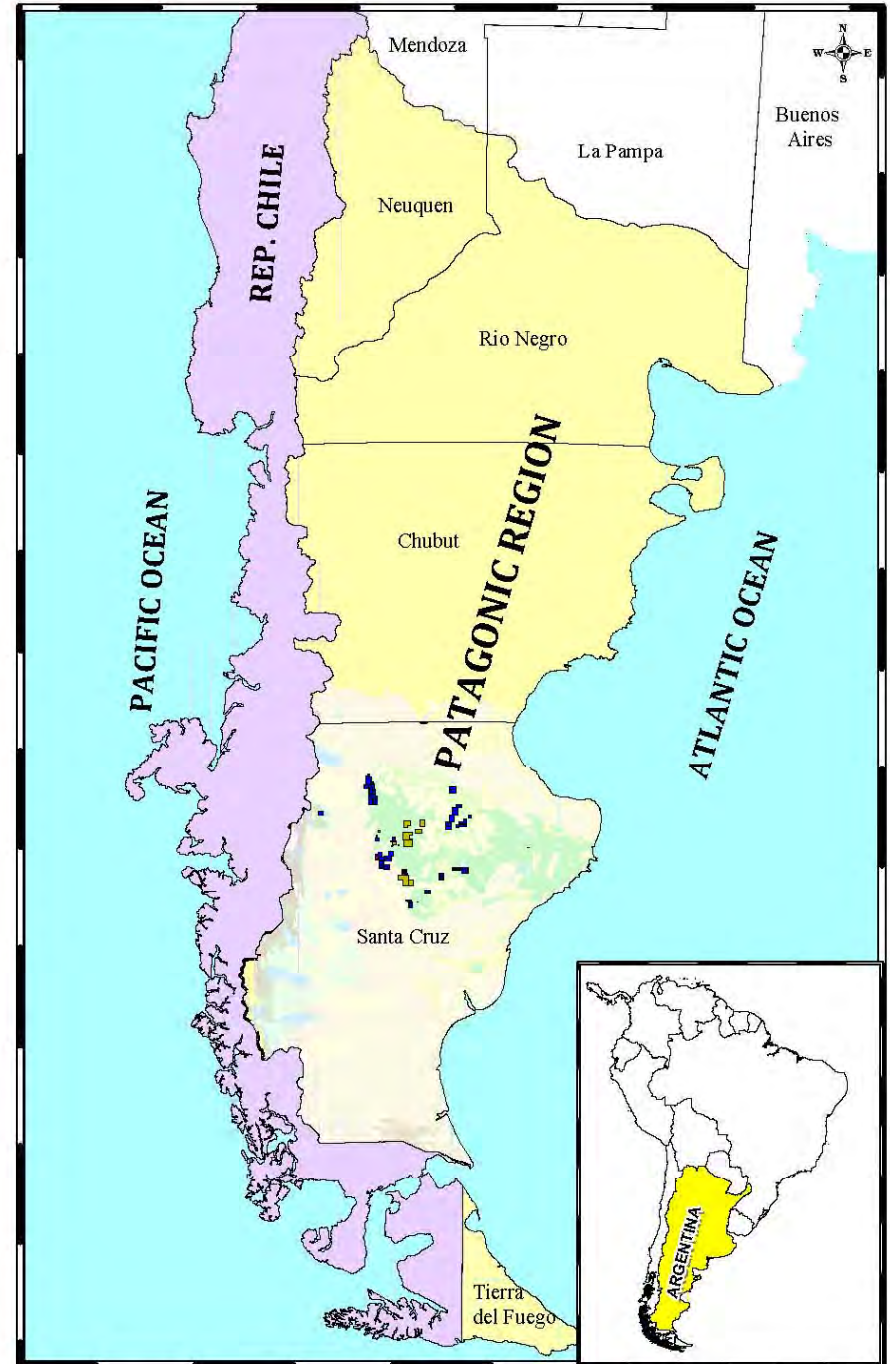
AREA OF OPERATION

Patagonia Gold through its 100% subsidiary Patagonia Gold S.A. (PGSA) operates in four of the Argentine Provinces in Patagonia as well as Region XI in Chile

Total held under license 6,899* km²
Contained within ~190 properties

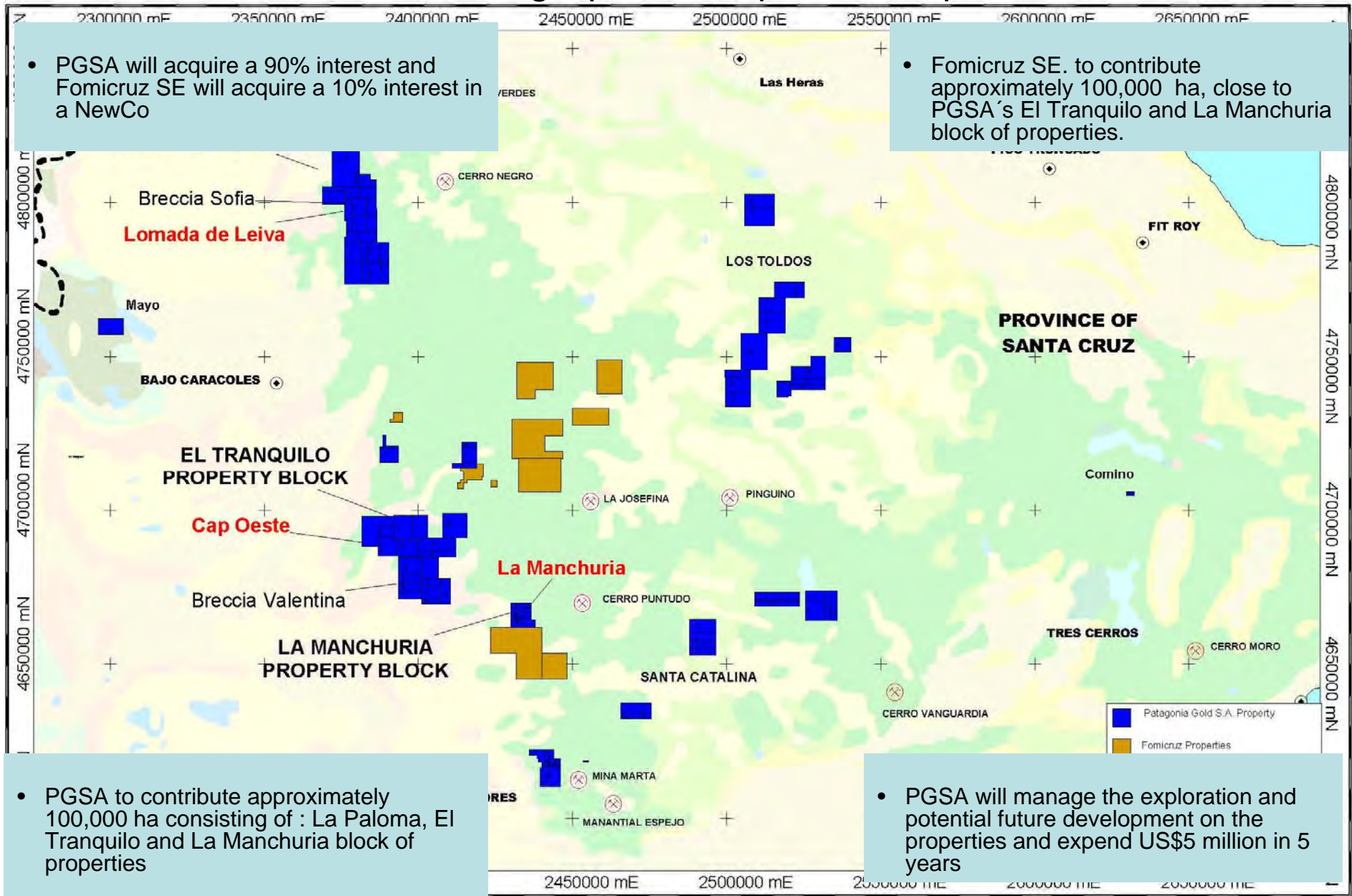
* As at 31 May 2009.

Note: The numbers and areas of properties shown above may vary from time to time as a result of acquisition, relinquishing and or conversion from exploration claims to mining claims



PGSA and FOMICRUZ in SANTA CRUZ

form strategic partnership on 14th April



- PGSA will acquire a 90% interest and Fomicruz SE will acquire a 10% interest in a NewCo

- Fomicruz SE. to contribute approximately 100,000 ha, close to PGSA's El Tranquilo and La Manchuria block of properties.

- PGSA to contribute approximately 100,000 ha consisting of : La Paloma, El Tranquilo and La Manchuria block of properties

- PGSA will manage the exploration and potential future development on the properties and expend US\$5 million in 5 years

La PALOMA PROPERTY

LOMADA DE LEIVA PROJECT



LOMADA de LEIVA



Long section gold g/t x metres

PLANNED

Milestones for Lomada Project.

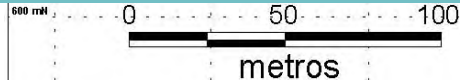
- Trial Heap Leach construction, Q3 2009
- Loading of Trial Heap leach pad, Q4 2009
- Base-line environmental study, Q4 2009
- Full Feasibility study end of Q4 2009

- First Gold production from Trial Heap leach Q4 2009

BRECHA SOFIA PROSPECT

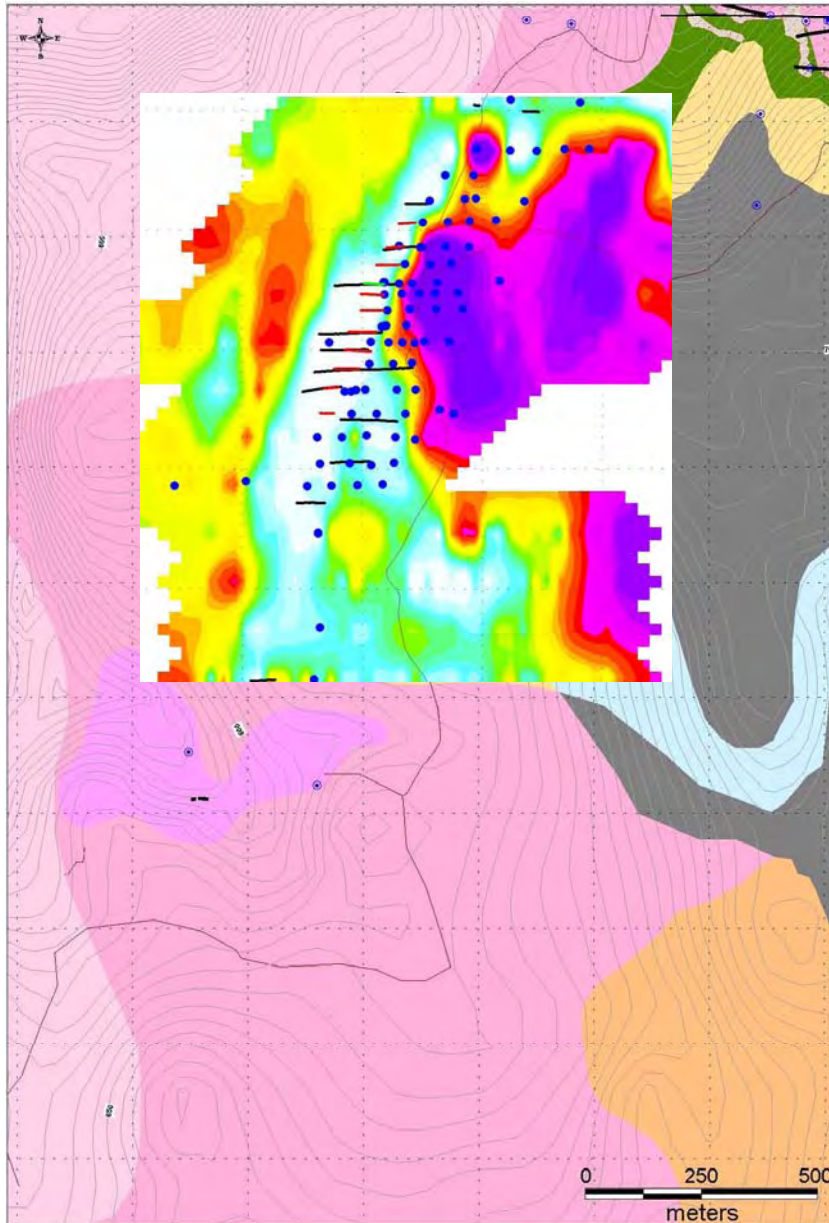
- Drilling of 21 holes for 3,097Metres.
- Geophysical Survey
- Follow-up drilling planned in conjunction with Lomada exploration

350/oz. gold price.

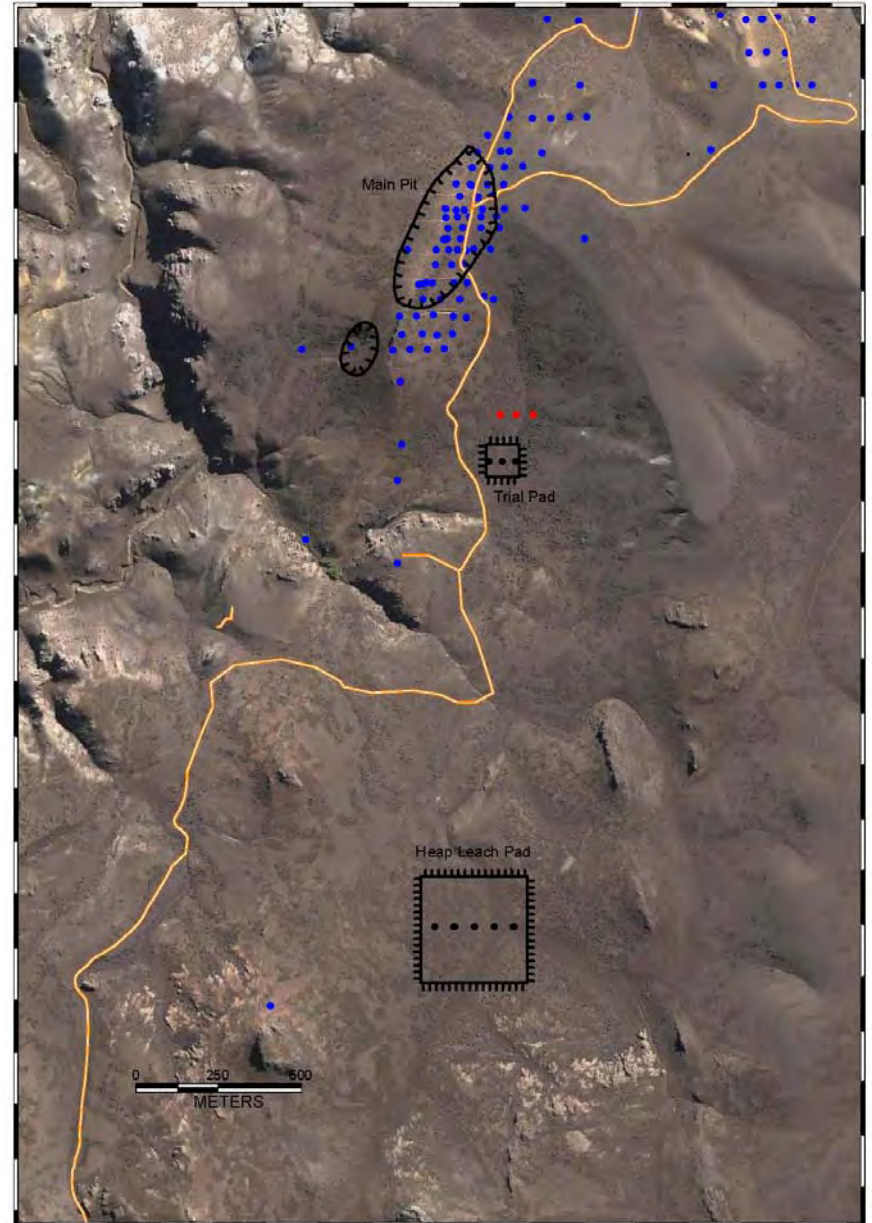


LOMADA de LEIVA

Plan of Geology with drill holes



Aerial view of proposed Leach Pads



Leach columns – 1/2” 4” and 12”



EL TRANQUILO PROPERTY BLOCK



EL TRANQUILO PROPERTY

CAP OESTE PROJECT EXPLORATION

COMPLETED

- 95 drill holes for initial resource
- NI 43-101 Resource estimate at 0.30 grams per tonne of gold cut off is:
Indicated:
149,842 oz. gold + 3,647,751 oz silver
Inferred:
154,257 oz. gold + 3,282,074 oz silver

- Drilling of an additional 61 drill holes comprising 14,677.45 metres
2,702 samples

PLANNED

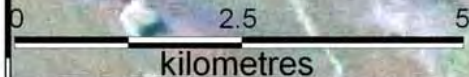
- Announce upgrade to Resource estimate
- Drilling on Main Zone and extensions
- Scoping Study to commence Q3 2009

COMPLETED

- Reconnaissance exploration, mapping and trenching
- Drilling of 6 prospects with 29 holes for 2,678 metres
- Don Pancho 9 holes for 780 metres
- Felix 4 holes for 262 metres
- Vetas Norte 8 holes for 696 metres
- PAMPA 6 holes for 620 metres
- COSE 2 holes for 300 metres

PLANNED

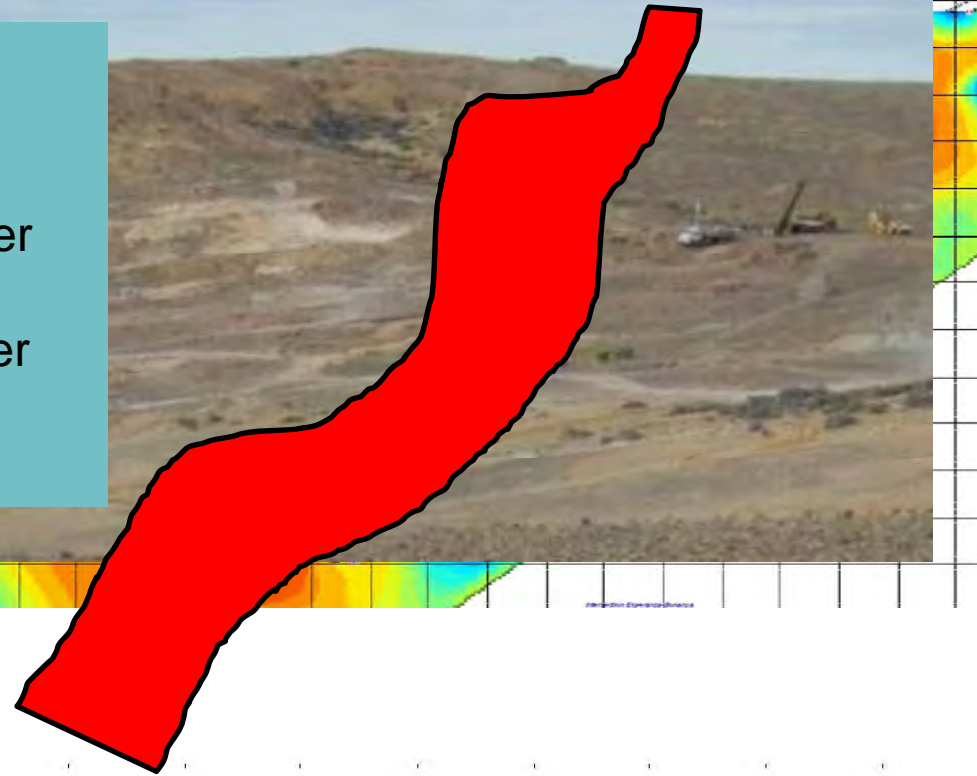
- Assimilation of drilling and additional exploration data
- Detailed geophysical survey
- Follow-up drill programme
- Continue exploration on new claims



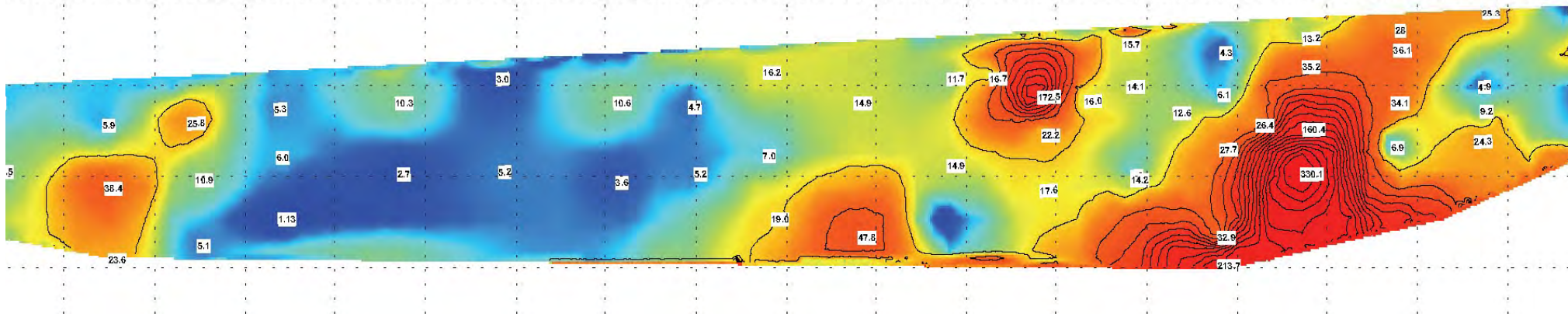
CAP OESTE

Long-section showing Au x metre based on 2008 / 9 drill results

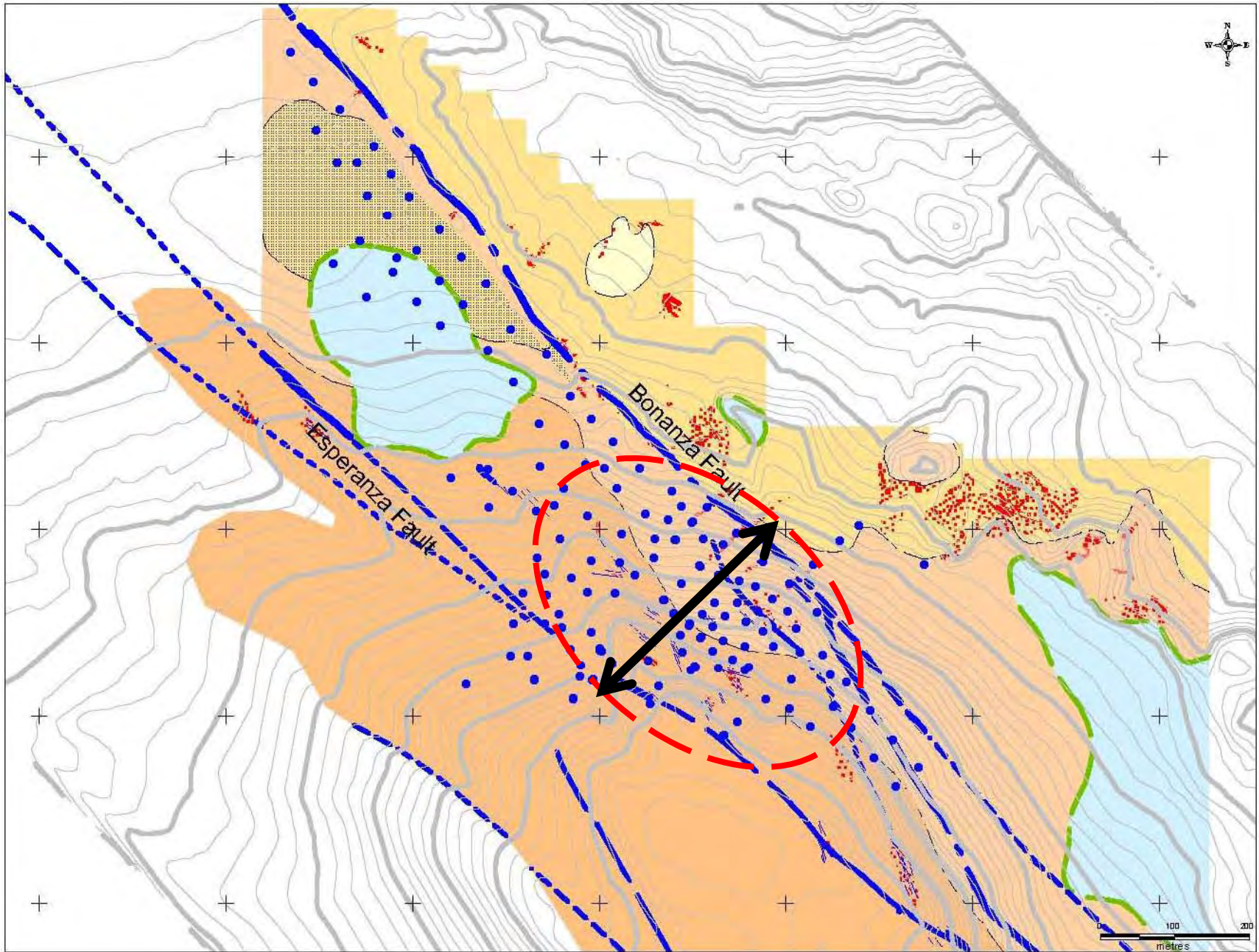
- NI 43-101 Resource estimate at 0.30 grams per tonne of gold cut off is:
Indicated 149,842 oz. gold + 3,647,751 oz silver
Inferred 154,257 oz. gold + 3,282,074 oz silver
400,350 oz gold equivalent



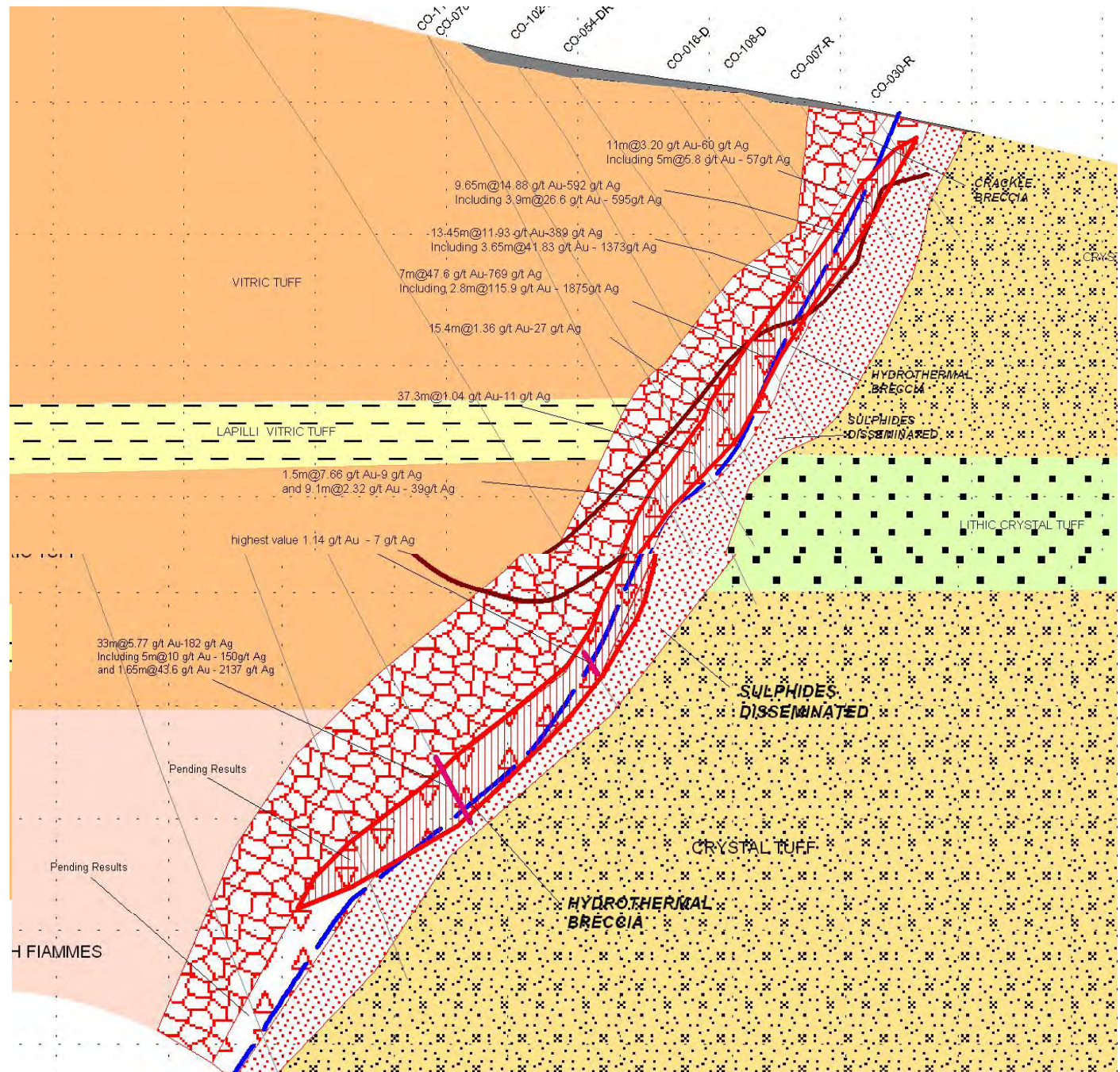
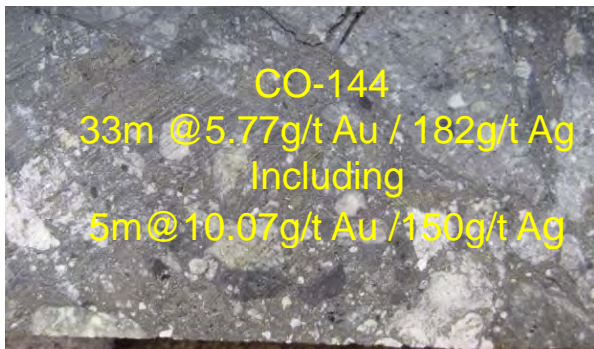
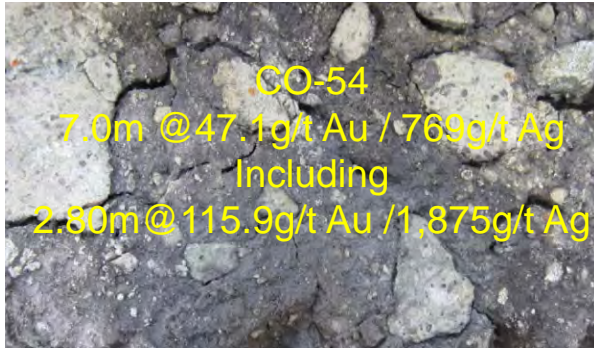
Long section showing gold contours used in 2008 Resource



CAP OESTE PROJECT



CAP OESTE - Drill hole sections N 9950 / 10100



CAP OESTE

Strike extension exploration

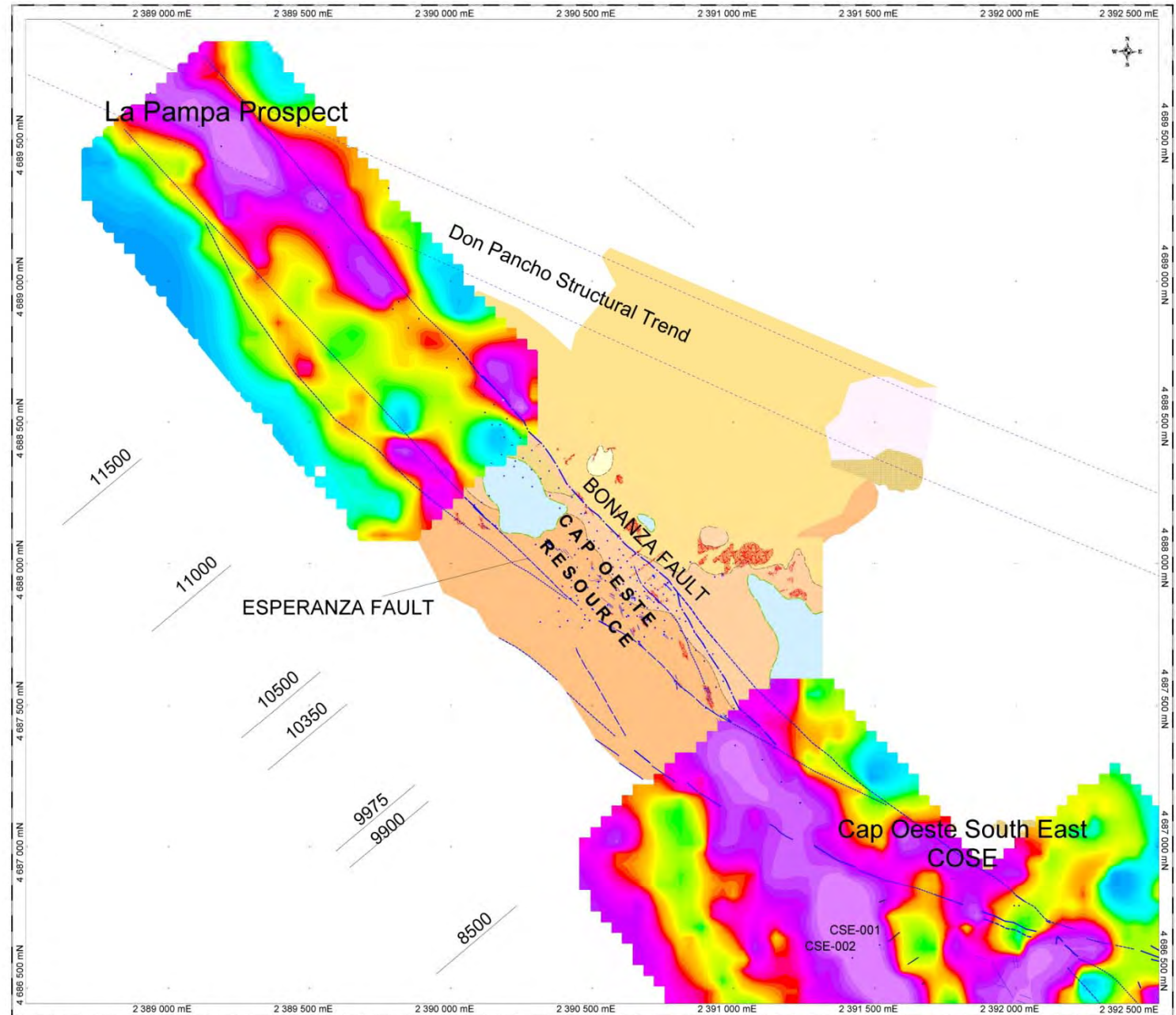
La Pampa drilling

Zone of intersection of the Bonanza fault structure and the Don Pancho corridor.
CX-038, from 114m
2.25m @ 5.71 g/t Au

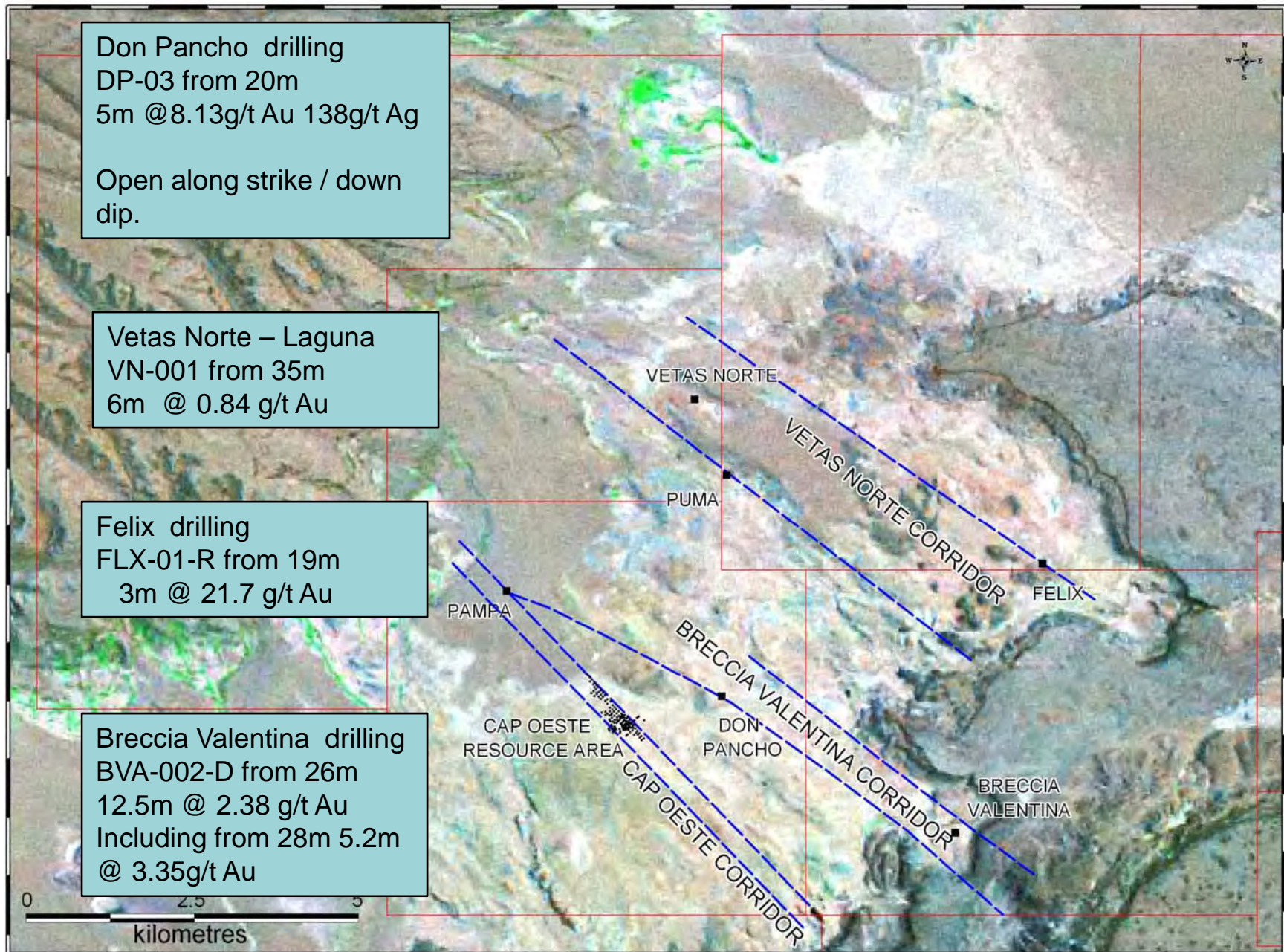
Cap Oeste Resource

Cap Oeste South Este (COSE)

CSE- 002, from 134m
12m @ 2.53g/t Au
Including:
3.00m @ 5.19g/t Au



El Tranquilo Property Block Exploration



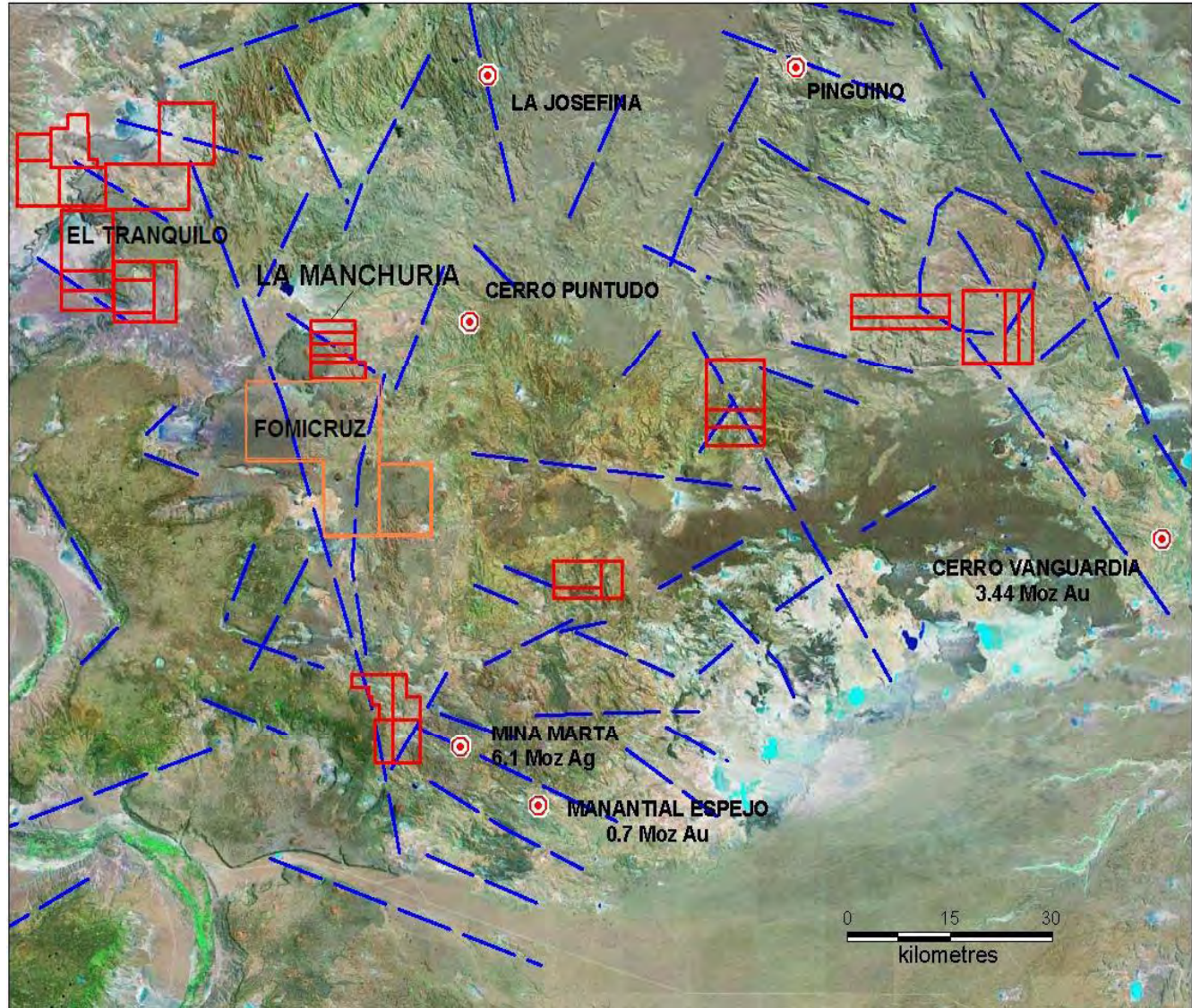
La MANCHURIA

COMPLETED

- 40 drill of holes for 8,099 metres on the Main Zone.
- High grade gold and silver results in several intersections

PLANNED

- Geophysical survey
- Assimilation of exploration and drill results
- Peripheral exploration
- Follow up infill drill programme and to extend Main Zone
- Q4 2009 for Resource study.

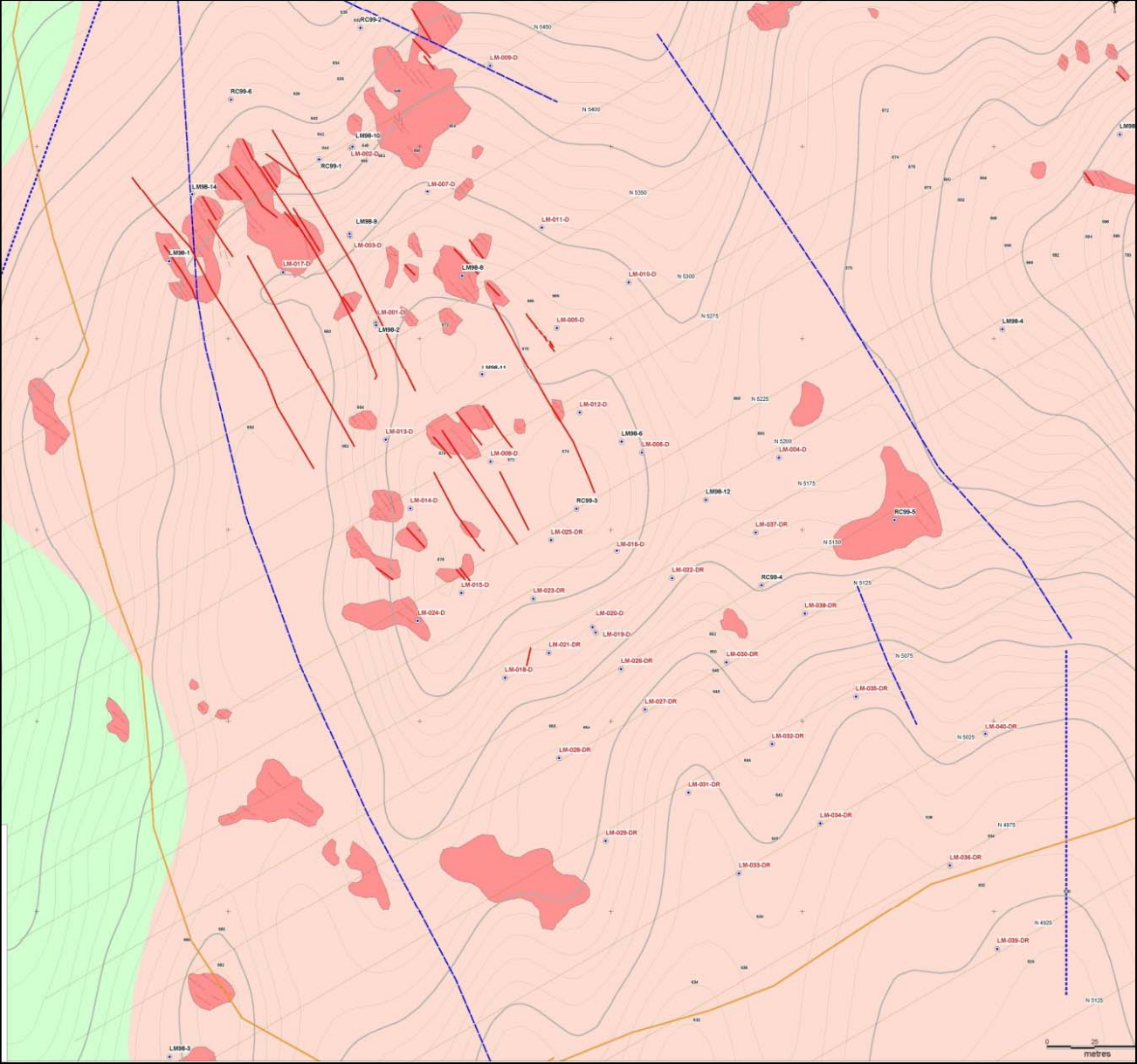


La MANCHURIA

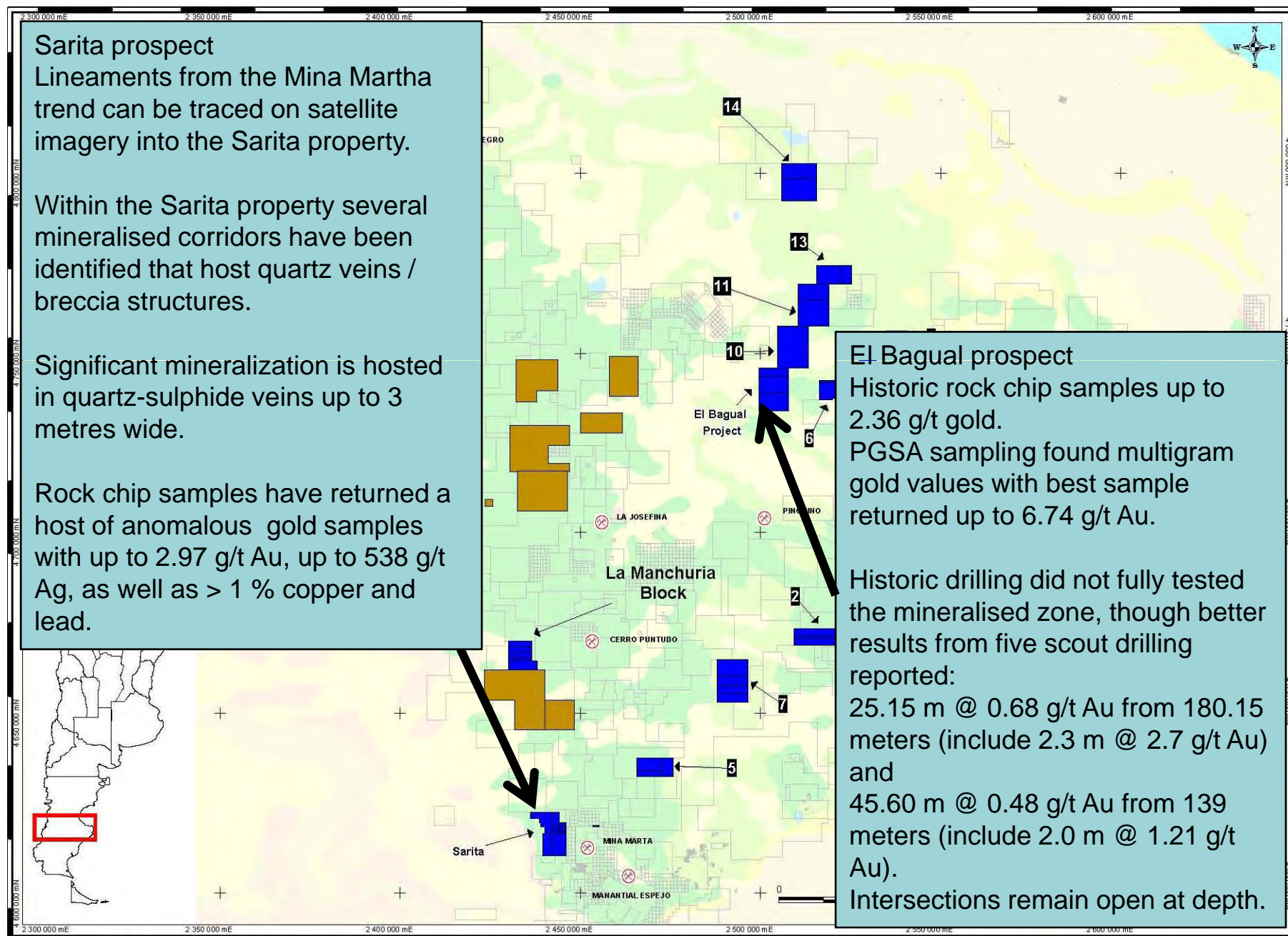
Drill hole location plan

Significant results

Drill Hole No.	From Metres	Interval Metres	Grade Au g/t	Grade Ag g/t
LM-002-D	43.30	0.55	8.08	10
<i>and</i>	52.55	1.51	6.38	4,521
LM-005-D	22.00	0.65	3.17	1,445
LM-008-D	82.00	0.50	20.10	2,980
<i>and</i>	90.00	0.50	20.20	509
<i>and</i>	105.90	0.70	11.55	963
LM-011-D	71.30	0.80	13.80	39
<i>and</i>	94.45	0.55	12.35	2,220
<i>and</i>	172.50	0.50	5.82	1,980
LM-012-D	135.15	0.50	13.85	26
<i>and</i>	192.60	0.55	7.79	4,920
LM-014-D	103.80	1.20	10.30	735
LM-015-D	60.70	1.00	20.10	23
<i>and</i>	95.25	1.20	58.90	4,150
LM-016-D	187.85	0.85	11.80	33
LM-017-D	68.00	1.00	14.50	19
LM-020-D	119.50	2.85	22.35	401
LM-022-DR	154.35	0.50	16.50	315
<i>and</i>	184.65	2.35	28.82	344
<i>and</i>	196.00	0.60	13.65	86
LM-023-DR	121.00	4.00	13.31	145
<i>and</i>	132.50	2.85	8.33	89
LM-030-DR	127.30	0.55	24.70	3,660
<i>and</i>	142.50	3.00	34.77	4,164
<i>including</i>	143.50	1.10	82.47	10,485
LM-032-DR	115.00	1.15	5.65	765
LM-037-DR	155.10	1.50	15.10	29
<i>and</i>	248.65	1.15	118.50	127



Exploration in Santa Cruz



PROGRAMME FOR 2009

- Lomada de Leiva
 - Complete Metallurgical testing, Environmental and Base-line Studies
 - Construct and load 50,000 tonne Trial heap Leach operation
 - Commence production of gold from Trial by Q4 2009.
 - Complete a Full Feasibility Study.
- Cap Oeste
 - Continue drilling to Q2 2009 to expand the resource
 - Upgrade the existing NI43-101 compliant resource estimate Q3 2009
 - Commence Scoping study Q3 2009
 - Re-commence drilling in Q4 2009 to expand the resource.
- El Tranquilo Block continue drilling and exploration
- La Manchuria
 - Re-commence drilling on high grade Main Zone in Q4 2009 for Resource definition.
- Continue Exploration and Reconnaissance of the Santa Cruz property portfolio.

DEVELOPMENT OBJECTIVES

To become a gold producer by 2010

- Advancing the Lomada de Leiva low cost gold project through trial test work and full Feasibility-2009.
Permitting and construction- 2009/10. Production 2010.

Growth

- Expansion of the Lomada de Leiva gold project through exploration
- Advancing the much larger, high grade, Cap-Oeste gold-silver project towards production by 2012
- Advancing the La Manchuria, high grade, gold-silver deposit towards Production
- Exploration and development of PGD's highly prospective portfolio of properties in Santa Cruz and other Provinces

